



BM7286 IFR COVERALL

- EN ISO 11612:2015
- EN ISO 61482 Class 1
- EN ISO 15025:2016 (Method A)
- EN 1149-5:2008

FABRIC

Blend: 55% Modacrylic, 43% Cotton, 2% Antistatic
Weight: 180 GSM (5.3 OZ)

DESIGN SPECIFICATION

- Two concealed snap buttons on neck
- Heavy duty two-way taped YKK brass zipper with storm flap closure and metallic snap button on belly
- Two cross chest pockets with YKK zipper closure
- Two side pockets, pass-through and snap buttons
- Two rear patch pockets with flap snap button on right and open left pocket
- One utility tool pocket on right leg
- Pencil pocket and small Velcro flap pocket on arm
- Elastic back waist and pleated bi-swing action back
- Adjustable cuffs with two snap buttons
- One-piece lay-flat collar and hanger loop
- Stitched with FR thread
- Double stitched 2" FR reflective tapes on shoulders, arms and legs

APPLICATIONS

- Oil & Gas
- Drilling
- Refinery
- Construction
- Manufacturing
- Logistics

SIZES

Small | Medium | Large | XLarge | 2XL | 3XL | 4XL

COLORS

Red

Orange

Royal B.



CAT

1

EN 11612



EN 61482-1



EN 1149-5

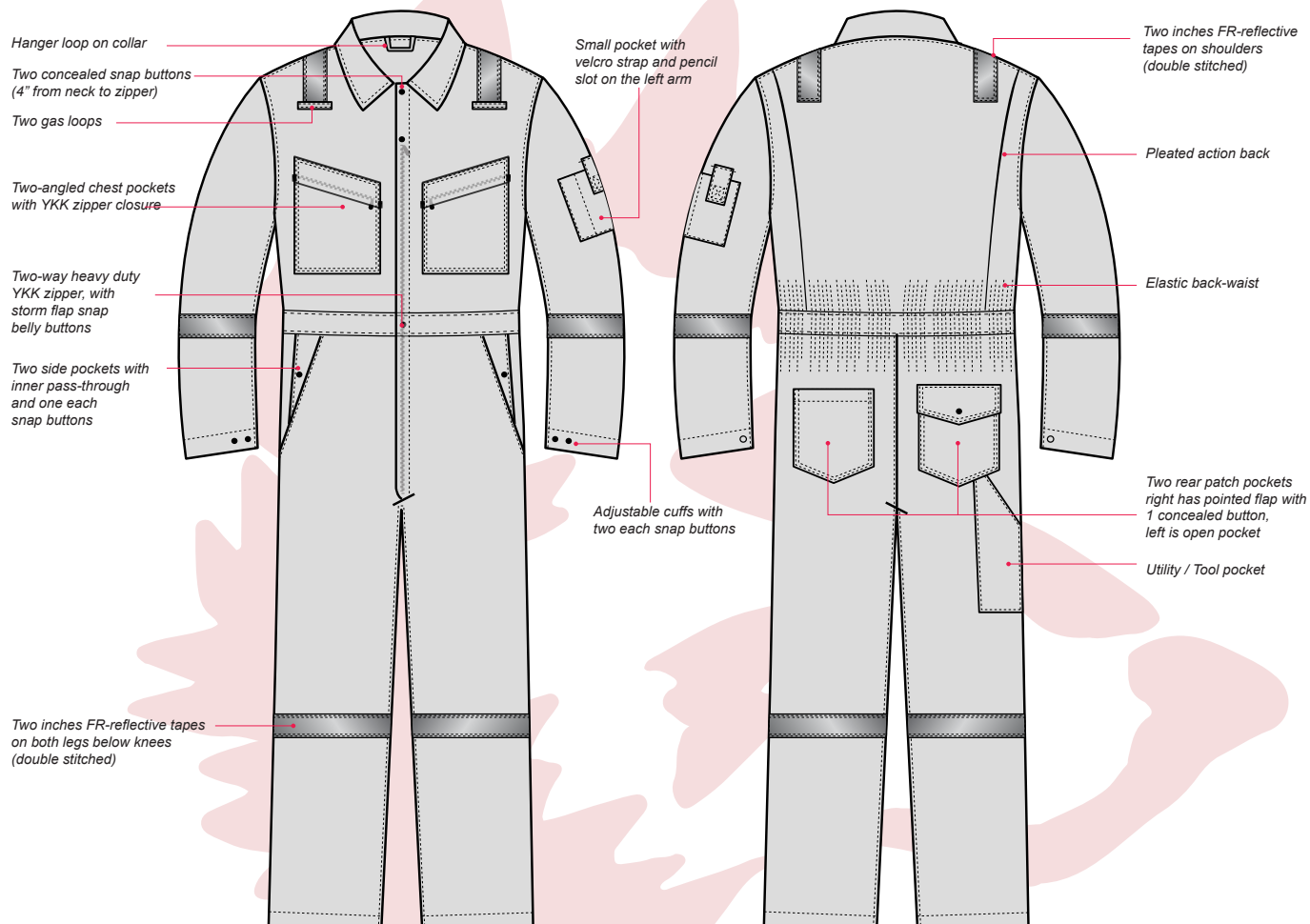




BM7286

IFR COVERALL

TECHNICAL DRAWING



LOGO AND BADGES

- Logo placement (direct or indirect embroidery)
- *Please provide us your corporate logo branding in high resolution quality
- Name badge/velcro

POCKETS

- Additional or custom design pockets

GARMENT COLOR



REFLECTIVE STRIPING OPTION

- 1 Inch silver tape
- 2 inches silver tape
- 3 inches tape
- Restro design (Yellow-Grey-Yellow)

**Please note that additional options are all subject to price change and approval.*